

GREATER FLEXIBILITY INCREASED PRODUCTIVITY

SANDVIK WN MODULAR SCREENING MEDIA SYSTEM



A PARTNER IN PRODUCTIVITY

Your screening media is just as important to your operation as choosing the right chamber for your crusher. But it doesn't stop at screens alone. When your setup is optimized for your unique needs, then you really start maximizing your productivity.

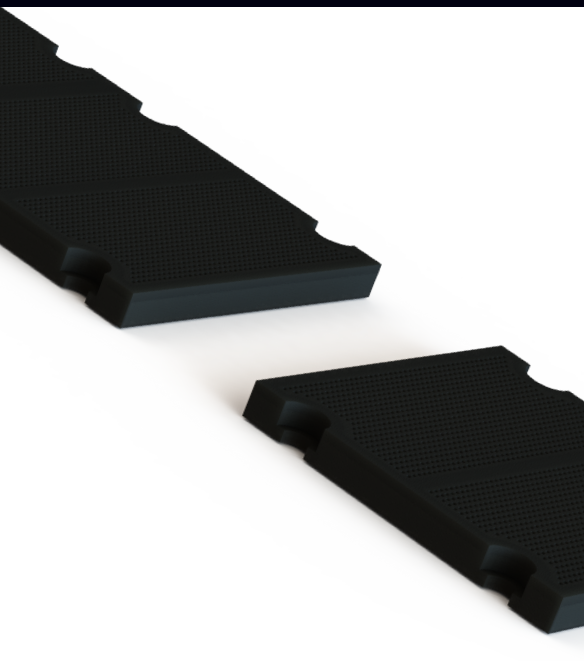
Screening media is not one size fits all. Unlike many other suppliers of screen panels, we intimately understand the challenges you face and can work with you to analyze your classification objectives and challenges to create a screening media solution that will maximize your operation – and your output.

With Sandvik, you get an OEM partner with more than a century of experience in crushing and screening. Bringing all of our deep expertise and process knowledge to your operation, we not only provide you with the right screening media. We also have an array of service offerings to optimize your entire crushing and screening circuit, helping you solve problems, and raise your profits.

1 million ton performance guarantee*

*Applicable for WN7000H. Warranty terms and conditions apply.

Sandvik WN4000 & Sandvik WN5000



Sandvik WN6000 & Sandvik WN7000H



A VERSATILE SYSTEM FOR IMPROVED SCREENING ACCURACY

When using modular screening media from Sandvik the deck configuration is flat to allow the material bed to be rapidly and evenly distributed over the full width of the screen, increasing screening efficiency. For final screening, dam bars can be used to reduce the material speed and further increase screening accuracy.

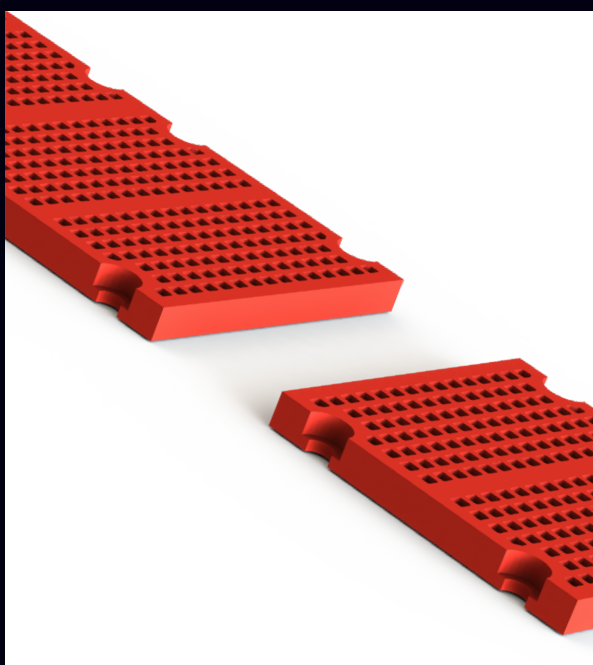
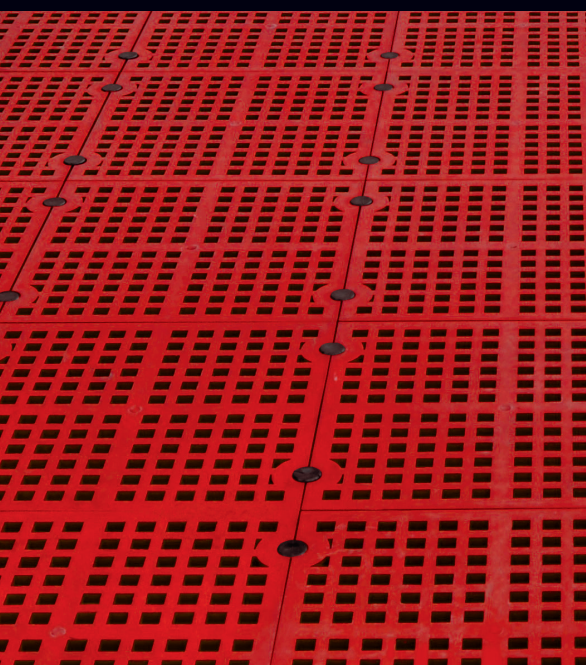
The amount of fines carry-over is reduced by using modules with deflectors. No blind areas along the material flow means less carry-over and more accurate screening. The individual modules can easily be replaced for wear reasons or in order to change aperture size.

A pin and sleeve attachment system lock the modules safely onto sturdy steel profiles.

An adapter system that makes it possible to install cross-tensioned media on Sandvik modular decks is also available.

We offer modular screening media for a variety of applications and deck configurations. Choose WN4000/5000 for fine screening in difficult conditions with feed lump size between 10-50 mm, WN6000/7000H for fine to medium coarse screening in dry applications with feed lump size between 20-150 mm and WN8000 polyurethane screening media in wet applications with feed lump size between 10-100 mm.

Sandvik WN8000



BOOST YOUR PRODUCTIVITY

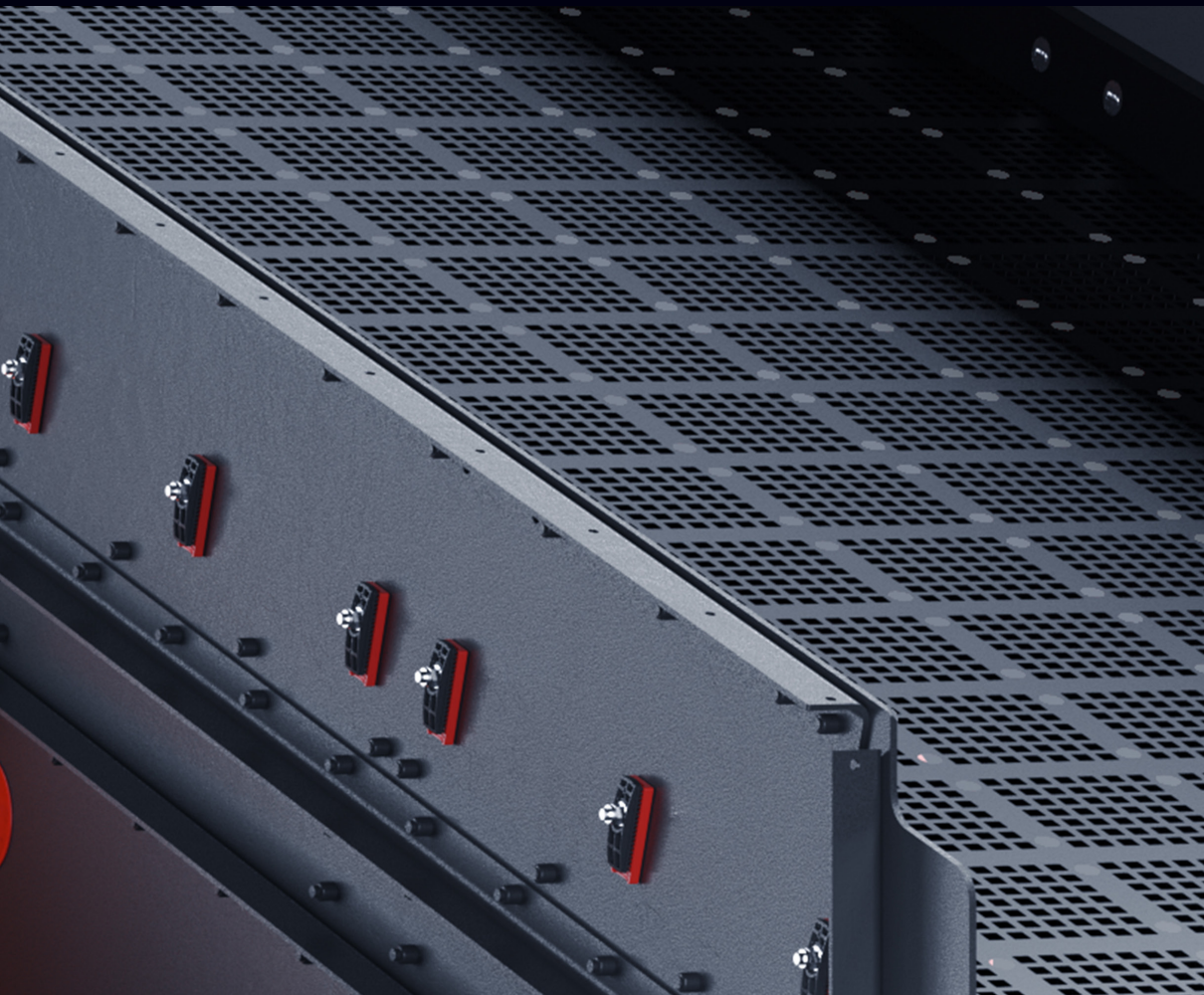
By choosing original modular screening media from Sandvik, you will get a host of capacity-increasing and maintenance-reducing benefits to help you boost your productivity.

INCREASED CAPACITY

This hard-wearing long-lasting modular screening media extend maintenance intervals and minimize downtime for maximum utilization of the screens. Sandvik modular decks are flat to enable the material to be rapidly distributed evenly over the full width of the screen, increasing efficiency. Sandvik anti-blinding modules are made of a special soft rubber of flexibility that prevents pegging and blinding. Especially when screening small particles with high moisture content.

GREATER FLEXIBILITY

Modules are available in two different sizes, 305x305 mm (1'x1') and 305x610 mm (1'x2'), in a number of rubber compounds as well as polyurethane. Apertures can be punched or molded in several sizes, shapes and patterns. The wide product offering allows us to select the best product for each application. Modules are easy to replace in case they are worn out or for fine tuning the screen.



MORE ACCURATE SCREENING

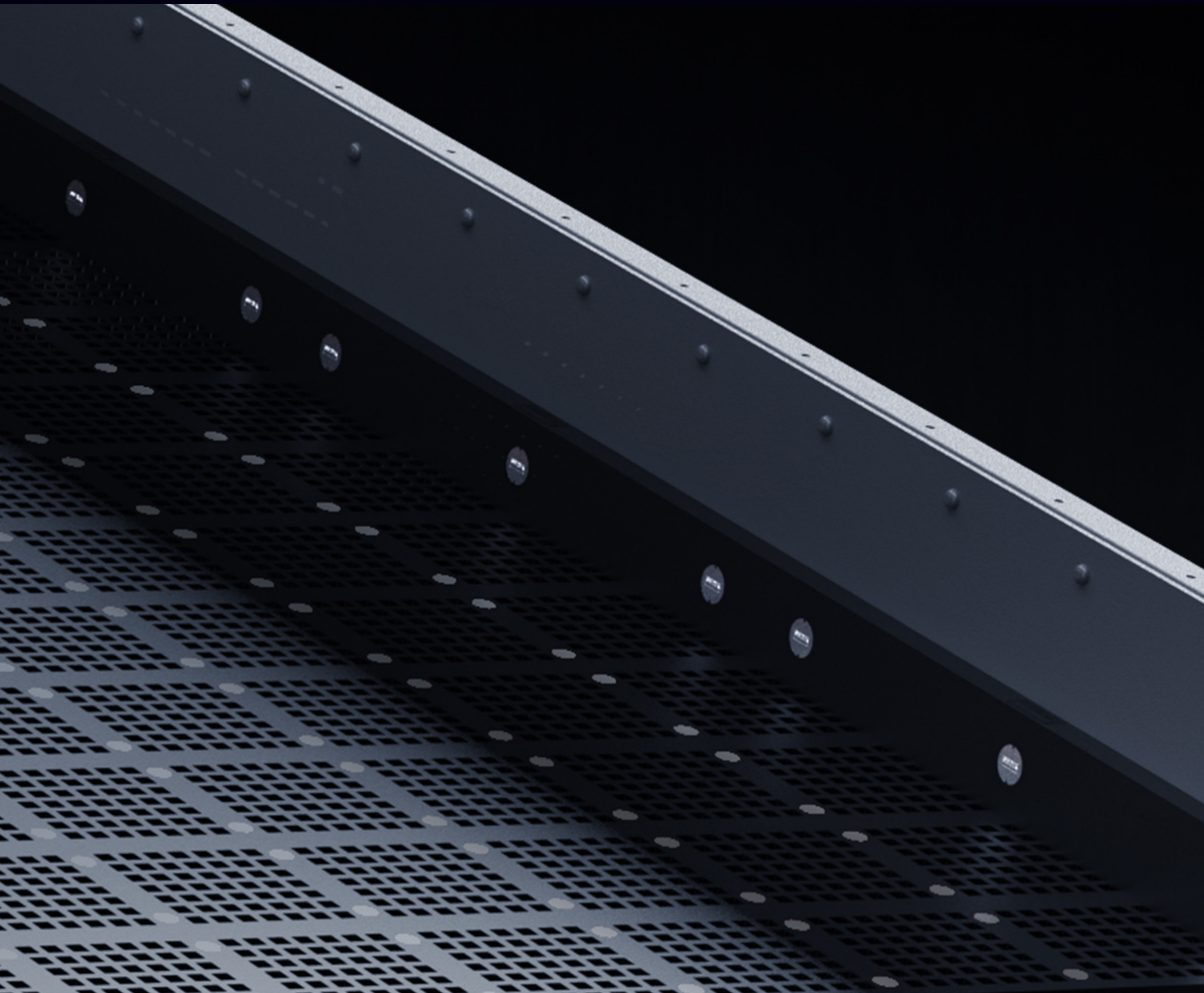
Sandvik modular screening media is designed for high open area. Material and aperture shape and pattern are selected based on application. The risk of fines carry-over is reduced through material deflectors on the solid part of the modules. The result is more accurate screening and less misplaced particles in the final product.

RELIABILITY AND VERSATILITY

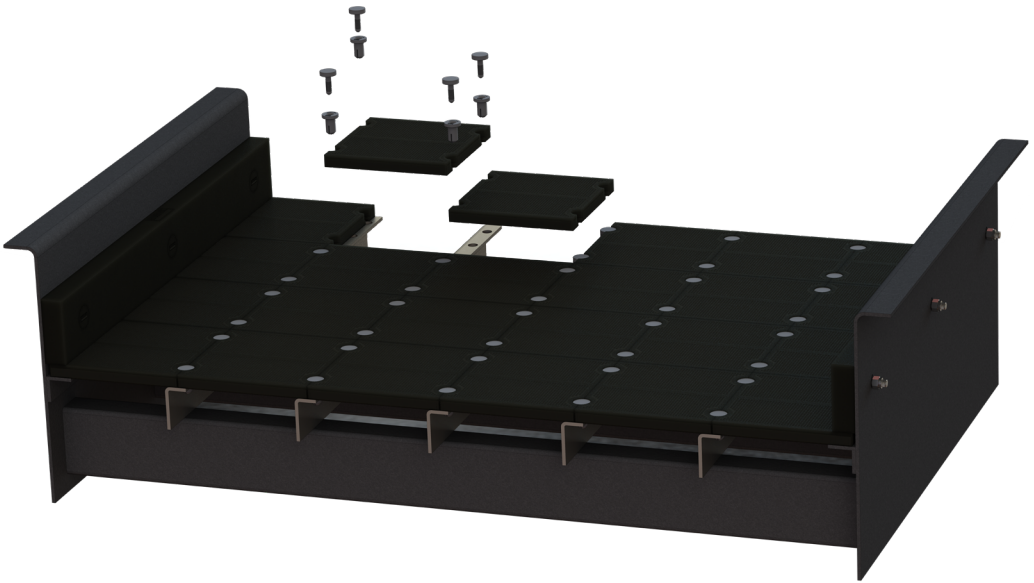
A reliable pin and sleeve fastening system locks the modules safely on longitudinal steel profiles (stringers). Special stringer guards have been designed to protect the steel profiles against wear. An adapter system has been developed making it possible to install cross-tensioned media on screens equipped with our modular screening media deck design. Combinations of modular screening media and cross-tensioned media is also possible.

SAFER AND MORE QUIET WORKING ENVIRONMENT

By using Sandvik rubber or polyurethane modules in the screen, the noise level in the plant is reduced, improving the working environment and together with its low weight and manageable size our modules are easy and safe to handle.



WN4000 & WN5000



MODULAR ANTI-BLINDING SCREENING MEDIA

A modular screening media of soft rubber with with punched or molded apertures, primarily for fine screening in difficult conditions, with a separation between 2-16 mm and a maximum feed size of 50 mm.

TYPE

WN4000 & WN5000 modular anti-blinding screening media.

DIMENSIONS

Build height 30mm

Thickness punched (mm)	2.5, 3.5, 5.5, 8, 11
Thickness molded (mm)	3, 5, 8, 10, 12.5, 14, 15
Fasteners (pcs/foot)	2

Build height 40mm

Thickness punched (mm)	15
Fasteners (pcs/foot)	2

Length (mm)	305 or 610
Width (mm)	305

INSTALLATION

Mounted on longitudinal stringers.

If the feed drop height exceeds 1 m, a thicker screen module, a blank module or an impact module should be used at the point of impact.

MATERIALS

Wearing material	40° Shore A (50° Shore A in t=2,5mm (punched) & t=3mm (molded))
Reinforcement	Steel frame.

ATTACHMENT SYSTEM

Pin & Sleeve

APERTURES

Max. punched hole size 38 mm.

For larger holes and available molded holes contact your Sandvik Mining and Rock Technology representative.

- FR** Square holes in line: Used under normal conditions.
- FS** Square holes staggered: Used to prevent fines tracking with high fines content or on short screens. Slightly reduced open area.
- SL, SLS** Slots with the material flow: Used when higher capacity is desired, accuracy (oversize control) is less important and to avoid pegging in small apertures.
- STS** Slots across the material flow: Used for smaller separations, 2-4mm.

APPLICATIONS

Sandvik anti-blinding modular screening media is designed primarily for final and intermediate stage screening, generally with separations between 2–16 mm with a max feed lump size between 10–50 mm. Especially suitable for applications with high fines content.

MAX LOAD LIMITATION

2.5 and 3.5 mm	60 kg/m ²
5.5 mm	80 kg/m ²
8 mm	100 kg/m ²
11 mm	120 kg/m ²
15 mm	140 kg/m ²

RECOMMENDED THICKNESS AND AREA OF USE

SEPARATION (MM)	MAX PARTICLE SIZE (MM)*			
	10	20	30	50
2	2.5	2.5	-	-
4 - 6	3.5	3.5	3.5	-
8	3.5, 5.5	3.5, 5.5	5.5	-
10 - 12.5	-	5.5, 8	8	8
16	-	8, 11	8, 11	8, 11
19 - 25.4	-	-	15	15

○ = Recommended area of use ● = Improbable application

● = Borderline case

● = Not recommended

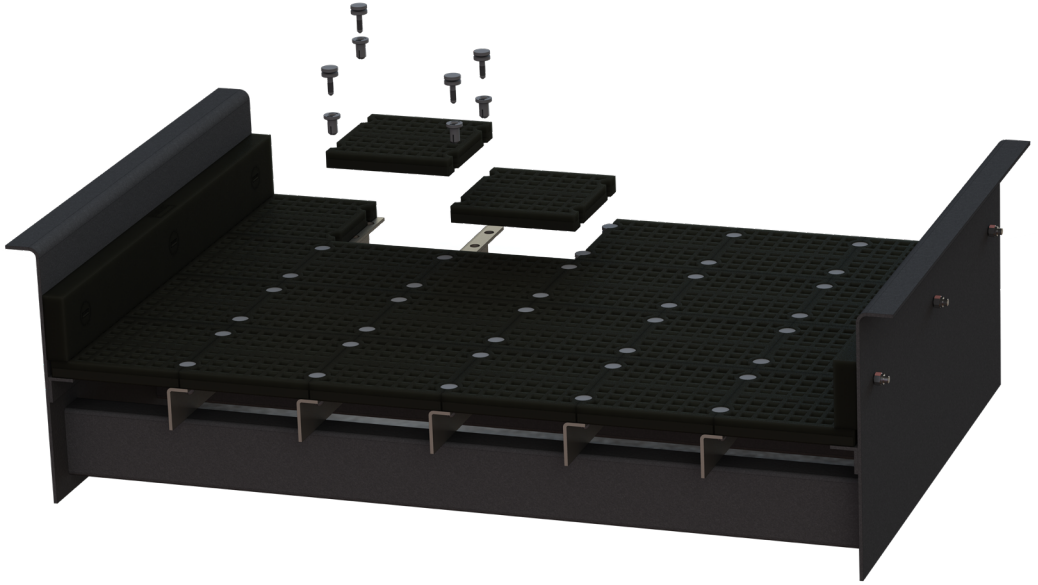
* Bulk density max. 1.8 metric ton/m³

If your application falls outside the limits specified above, please contact your Sandvik Mining and Rock Technology representative.

NOTE

Do not use in applications with any amount of oil present. The recommended hole size should be 1.25–2.5 times the screen panel thickness. Check the bed depth since an excessively high bed depth can cause sagging and an excessively thin bed might make the material bounce.

WN6000 & WN7000H



MODULAR RUBBER SCREENING MEDIA

A modular screening media of rubber with punched or molded apertures primarily for fine to medium coarse screening in dry applications with a separation between 10-63 mm and a maximum feed size of 150 mm. .

TYPE

WN6000

Application	Quarrying
Wearing material	60° Shore A rubber
Reinforcement	Steel frame
Attachment system	Pin & Sleeve
Available with both punched and molded apertures	

Build height 30mm

Thickness punched (mm)	8, 11
Thickness molded (mm)	8, 10, 12.5, 14, 15
Fasteners (pcs/foot)	2

Build height 40mm

Thickness punched (mm)	15, 20, 25
Thickness molded (mm)	20, 25, 30, 35
Fasteners (pcs/foot)	2

Build height 60mm

Thickness punched (mm)	30, 35
Thickness molded (mm)	45
Fasteners (pcs/foot)	3

Length (mm)	305 or 610
Width (mm)	305

WN7000H

Application	Mining/Quarrying
Wearing material	70° Shore A rubber
Reinforcement	Steel frame
Attachment system	Pin & Sleeve
Available with molded, both square and slotted apertures	

Build height 30mm

Thickness molded (mm)	8, 10, 12.5, 14, 15
Fasteners (pcs/foot)	2

Build height 40mm	
Thickness molded (mm)	20, 25, 30, 35
Fasteners (pcs/foot)	2
Build height 60mm	
Thickness molded (mm)	45
Fasteners (pcs/foot)	3
Length (mm)	305 or 610
Width (mm)	305

INSTALLATION

Mounted on longitudinal stringers.

If the feed drop height exceeds 1 m, a thicker screen module, a blank module or an impact module should be used at the point of impact.

APERTURES

Max hole size punched: FR88

Max hole size molded: FR100

- FR** Square holes in line: Used under normal conditions.
- FS** Square holes staggered: Used to prevent fines tracking with high fines content or on short screens. Slightly reduced open area.
- SL, SLS** Slots with the material flow: Used when higher capacity is desired, accuracy (oversize control) is less important and to avoid pegging in small apertures.
- CR, CS** Round holes: Used for screening coarse crushed material only when extra long wear life is required. Increased risk of pegging. Less open area.

APPLICATIONS

Sandvik modular rubber screening media is designed primarily for final and intermediate stage screening, generally with separations between 10 - 63 mm and a max feed lump size between 20 - 150 mm. WN7000H modules with moulded apertures available primarily for mining applications.

RECOMMENDED THICKNESS AND AREA OF USE

SEPARATION (MM)	MAX PARTICLE SIZE (MM)*								
	10	20	30	50	75	100	125	150	200
8	8	8	8	-	-	-	-	-	-
10 - 12.5	-	8	8	8, 11	-	-	-	-	-
16	-	8, 11	11, 15	11, 15	15	-	-	-	-
19 - 25.4	-	-	11, 15	11, 15	15, 20	20	-	-	-
31.5	-	-	-	15, 20	15, 20	20, 25	25	-	-
37.5	-	-	-	15, 20	25, 25	25, 30	30	-	-
45	-	-	-	-	25, 30	30, 35	30, 35	35	-
63	-	-	-	-	25, 30	30, 35	35, 45	45	45
70 - 90	-	-	-	-	-	45	45	45	45

○ = Recommended area of use ● = Improbable application

● = Borderline case

● = Not recommended

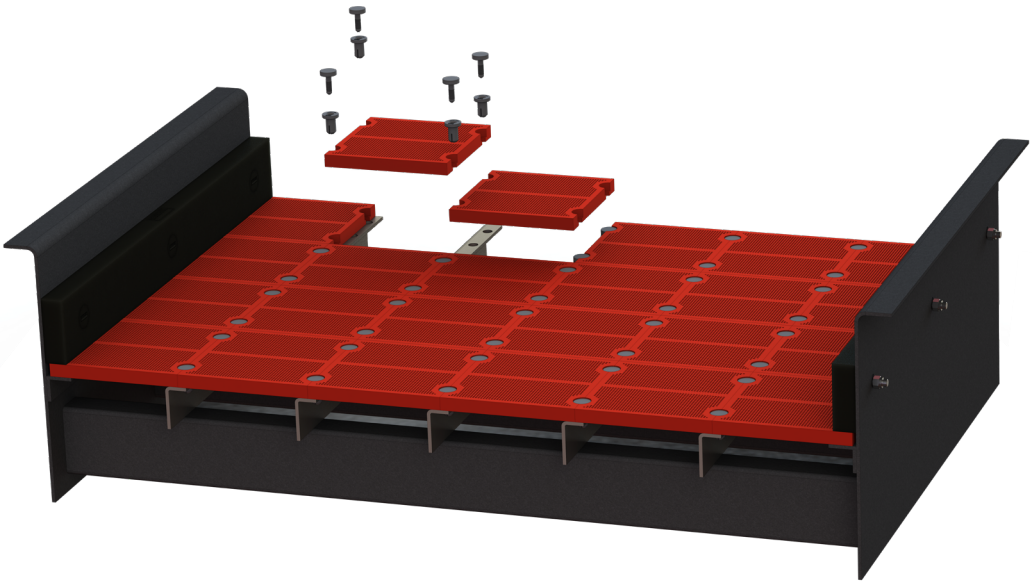
* Bulk density max. 1.8 metric ton/m³

If your application falls outside the limits specified above, please contact your Sandvik Mining and Rock Technology representative.

NOTE

Do not use in applications with any amount of oil present. The recommended hole size should be 1.25 –2.5 times the screen panel thickness (punched holes).

WN8000



MODULAR PU SCREENING MEDIA

A modular screening media of polyurethane with molded apertures primarily for fine to medium coarse screening in wet applications with a separation between 1-31,5 mm and a maximum feed size of 100 mm.

TYPE

WN8000 modular polyurethane screening media.

DIMENSIONS

Build height 30mm

Thickness molded (mm) 5, 6, 8, 10, 12, 15

Fasteners (pcs/foot) 2

Build height 40mm

Thickness punched (mm) 20, 25, 30

Fasteners (pcs/foot) 2

Length (mm) 305 or 610

Width (mm) 305

INSTALLATION

Mounted on longitudinal stringers.

If the feed drop height exceeds 1 m, a thicker screen module, a blank module or an impact module should be used at the point of impact.

MATERIALS

Wearing material	Thermoplastic polyurethane (TPU), 80° Shore A
Reinforcement	Steel frame

ATTACHMENT SYSTEM

Pin & Sleeve

APERTURES

Molded holes.

- FR** Square holes 3.5 - 40 mm in line: Used under normal conditions.
STS Slots with small apertures across the material flow: Used for small separations in wet screening.

APPLICATIONS

Sandvik modular polyurethane screening media is used primarily for wet screening in intermediate and final stages, generally with separations between 1 - 31.5 mm and a max feed lump size between 10 - 100 mm.

RECOMMENDED THICKNESS AND AREA OF USE

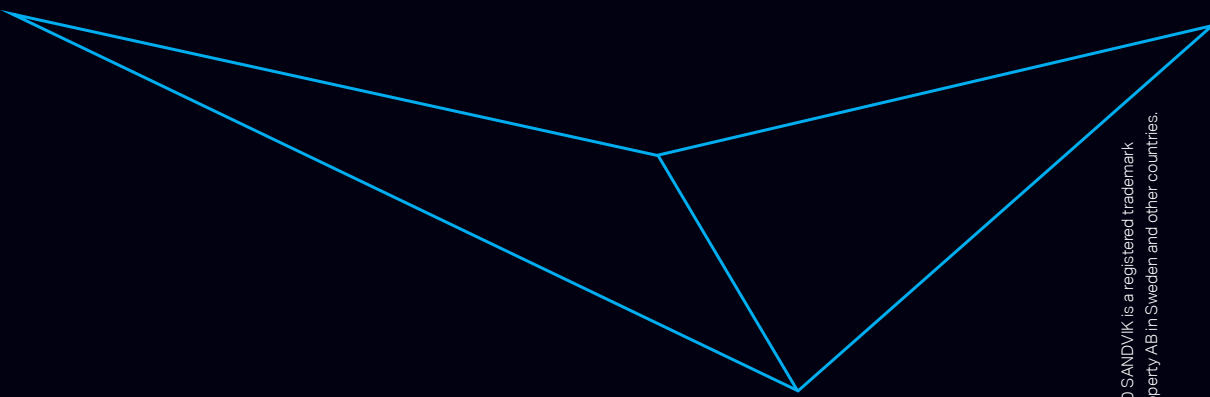
SEPARATION (MM)	MAX PARTICLE SIZE (MM**)						
	10	20	30	50	75	100	125
Dewatering	*	-	-	-	-	-	-
1 - 2	*	*	-	-	-	-	-
4 - 6	*	*	*	-	-	-	-
8	*	*	*	-	-	-	-
10 - 12.5	-	*	*	*	-	-	-
16	-	*	*	*	*	-	-
19 - 25.4	-	-	*	*	*	*	-
31.5	-	-	-	*	*	*	*
37.5	-	-	-	*	*	*	*

- = Recommended area of use ● = Improbable application * Sandvik WN8000 modular PU screening media thickness is hole size dependent
 ● = Borderline case ● = Not recommended ** Bulk density max. 1.8 metric ton/m³

If your application falls outside the limits specified above, please contact your Sandvik Mining and Rock Technology representative.

NOTE

Do not use in applications with any amount of oil present.



F5-1272/ENG © Sandvik AB 2020 SANDVIK is a registered trademark owned by Sandvik Intellectual Property AB in Sweden and other countries.

Test results are to be considered as results reached under certain and controlled test conditions. These test results should not be treated as specifications and Sandvik does not guarantee, warrant or represent the outcome of test results in any or all circumstances.

ROCKTECHNOLOGY.SANDVIK

