



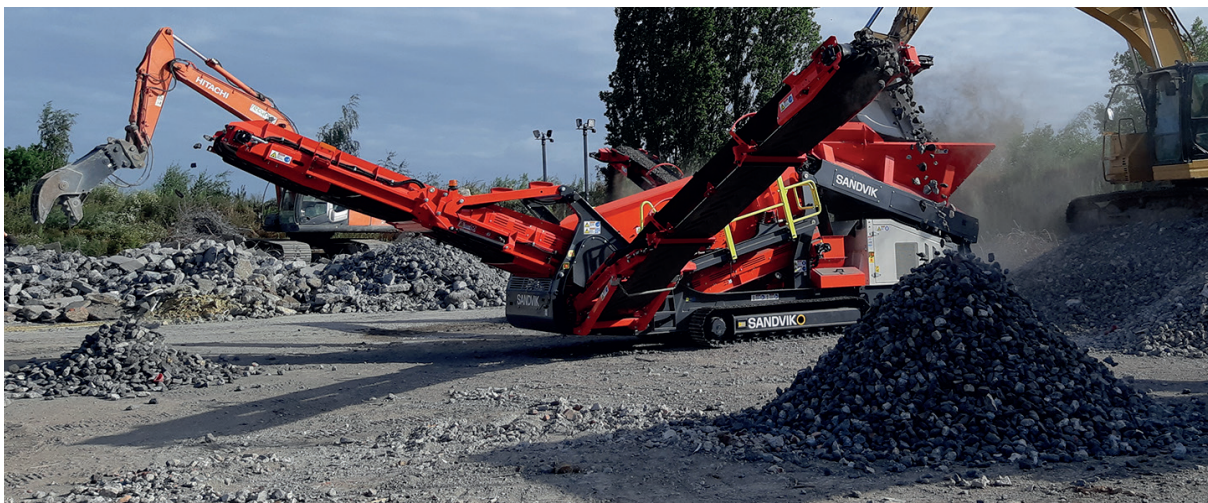
SANDVIK QE241 MOBILE SCALPER

TECHNICAL SPECIFICATION

The QE241 is the most compact model in the Sandvik range and is designed to meet the requirements of smaller operators who need a high performing, versatile unit with a smaller operating footprint that is easy to transport.

KEY BENEFITS

Reliability	<ul style="list-style-type: none">- Premium components selected throughout for maximum durability- Proven reliability and high performance- Capable of operating in the most hostile environments- Heavy duty chassis designed to accommodate interchangeable side conveyors and compatible for 2-way or 3-way split configurations
Productivity	<ul style="list-style-type: none">- Class leading open scalping area enabling it to deliver enormous rates of production- Heavy duty 11' x 4' / 3.35 x 1.24 m screen box with high speed and aggressive throw for optimum throughput- Large stockpiling capability through integrated hydraulic conveyors- User friendly PLC control system with sequential start-stop for speed and ease of set-up- Choice of screen media to suit a wide range of applications- Interchangeable side conveyors, which are compatible for 2-way or 3-way split operation- Quick to set-up and easy to transport, resulting in more uptime and higher productivity- Connected to Sandvik My Fleet with 7 year data subscription offering 24/7 fleet management, geo-fencing and remote operator support
Cost of ownership	<ul style="list-style-type: none">- Latest generation fuel efficient engines provide maximum performance and cost efficiency- Reduced fuel consumption through optimized hydraulic system and reduced engine RPM- Well-proportioned fuel tank to maximize intervals between refueling- Reduced cost of ownership through extended hydraulic fluid change intervals from 2000 hrs to 4000 hrs
Safety	<ul style="list-style-type: none">- Mandatory audible and visual warning for safe operation whilst tracking and start-up / shut down- Emergency stop buttons and conveyor pull stop cords around the plant for easy access during operation- Wireless radio handset and two speed control for safe tracking onsite- Maintenance platforms provide safe access for service and maintenance- Screen box jack up facility allows safe and easy access to the bottom deck for maintenance and media changes
Sustainability	<ul style="list-style-type: none">- Latest emissions compliant engine lowers environmental impact due to reduced fuel consumption, less operating noise and low emissions- 50 % hydraulic fluid saving with extended service interval from 2,000 to 4,000 hours





KEY SPECIFICATIONS	QE241
Hopper	
Width	2.36 m / 7' 9"
Length	3.8 m / 12' 6"
Capacity	4.2 m ³ / 5.5 yd ³
Type	Rigid one-piece
Feeder	
Type	Heavy duty plain belt
Width	1000 mm / 39"
Oversize conveyor	
Width	1200 mm / 47"
Discharge height	3.1 m / 10' 2"
Side conveyor (midsize)	
Width	650 mm / 26"
Discharge height	3.64 m / 11' 11"
Side conveyor (fines)	
Width	650 mm / 26"
Discharge height	3.86 m / 12' 8"
Transfer conveyor	
Width	1050 mm / 41"
Screen box	
Type	2 bearing
Decks	2 deck
Top deck	3.35 m x 1.24 m / 11' x 4'
Bottom deck	3.09 m x 1.22 m / 10' 1" x 4'

KEY SPECIFICATIONS	QE241
Tracks	
Length (centres)	2.49 m / 8' 2"
Width (shoe)	400 mm / 16"
Control	Radio / Umbilical
Power pack	
Engine type	CAT C2.8 Stage 5 / T4F 55 kW / 74 hp CAT C2.8 Stage 3A LRC * 55 kW / 74 hp
Diesel tank size	300 litres / 79 USG
Hydraulic tank size	280 litres / 74 USG
Transport dimensions	
Length	9.99 m / 32' 8"
Width	2.50 m / 8' 2"
Height	3.10 m / 10' 2"
Standard weight	18,559 kg / 40,915 lbs
Operating dimensions	
Length	12.23 m / 40' 1"
Width	14.20 m / 46' 8"
Height	3.90 m / 12' 10"
Performance	
Max feed size	400 mm ³ / 16"
Capacity (up to)	350 mtp ^h / 386 stph **
Travel speed	0.8 km/h / 0.5 mph slow 1.5 km/h / 0.9 mph fast
Max incline / Side to side	20° / 10°

Note. All weights and dimensions are for standard units only
* Lesser Regulated Countries

STANDARD SPECIFICATION

Light mast and cabinet lights
Radio control tracks 2 speed
Screen walkway platforms
Toughflex belt
Variable speed feed conveyor
3 hydraulic folding discharge conveyors
Wear resistant liners in hopper and conveyor feed boots
Dust suppression spray bars
My Fleet telematics with 7 year data subscription

For option availability please speak with your local Sandvik representative

** Application specific. Please contact a Sandvik representative for clarification on specifications and options
Sandvik reserves the right to make changes to the information on this data sheet without prior notification to users

ROCKPROCESSING.SANDVIK